



UNVEIL THE PINNACLE OF  
**UNITED LIVING**

PRESENTING



**Merushikhar**

AT ANDHERI EAST

LUXURIOUS 2, 2.5, 3 & 3.5 BHK  
RESIDENCES



Representative Image



A RENOWNED & UNITED  
LEGACY, NOW IN  
**MUMBAI**

Savvy Group, an esteemed Ahmedabad-based real estate firm, was established by Jaxay Shah, Sameer Sinha, and Jigish Shah. The organisation has quickly built a strong name in the highly competitive Ahmedabad real estate market. Savvy Group has gained the confidence of over 5,000 satisfied clients. Thanks to its portfolio of 21 finished projects, which includes 54.2 million square feet of developed space and 48 million square feet of plotted development. The company is also pleased that it is the only builder to have created green certified structures.

Savvy Group's first-ever iconic project in Andheri East is set to transform the Mumbai skyline. Elevate your standard of living with excellent connectivity, state-of-the-art amenities, and breathtaking views to experience a unparalleled luxury and sophistication.

# BEGIN YOUR JOURNEY TO THE PINNACLE OF UNITED LIVING

Whether connectivity or lifestyle, amenities or luxuries, Merushikhar is united with everything. Here is where you will belong and get an opportunity to embark on a tranquil way of life. With the finest infrastructure and excellent amenities, it is one of the most desired places to be in. It is also certified as a Green Building, which is truly rare in the city. The icon offers commercial spaces on the 1<sup>st</sup> floor for businesses in order to elevate their success and growth. To top it all Merushikhar is located in a Private - Freehold land, providing an added level of exclusivity and privacy for its residents.

## PROJECT HALLMARKS



G+15  
Magnificent Tower



Unmatched  
Connectivity



High-Speed  
Elevators



Certified As  
Green Building



Luxurious  
Amenities



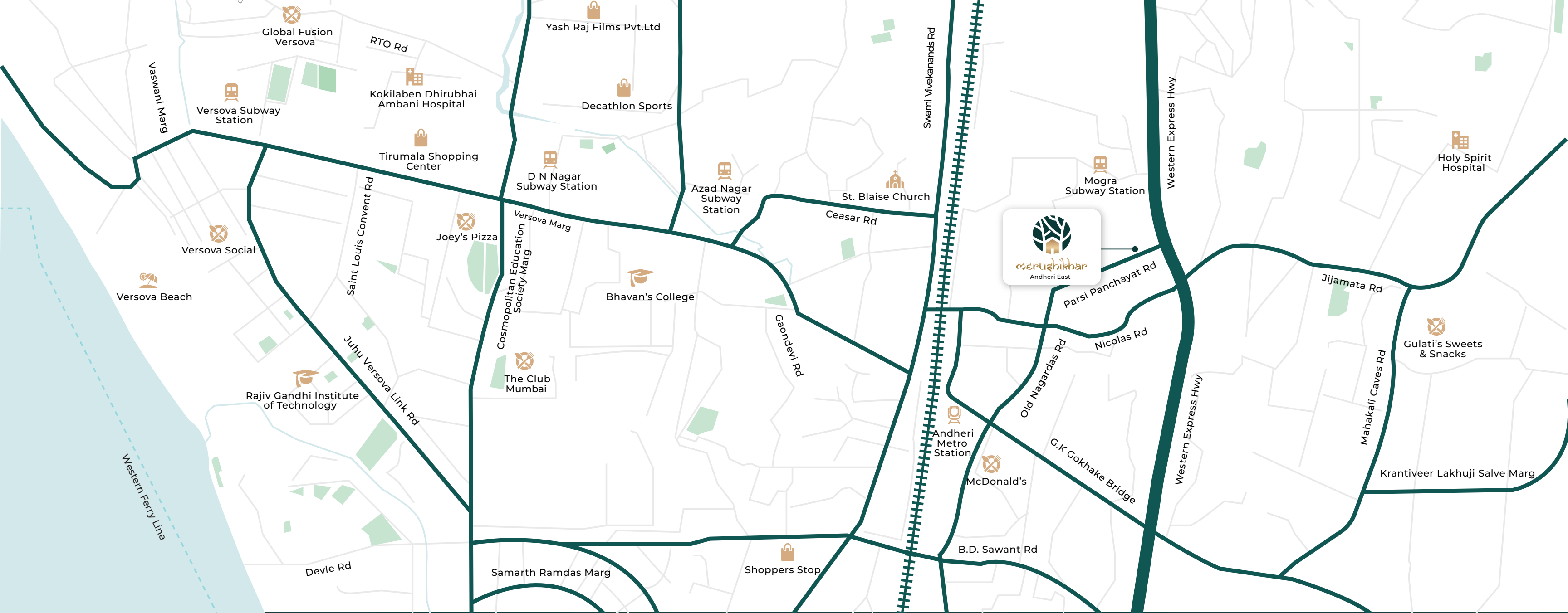
Air-Conditioned  
Entrance Lobby





BE UNITED BY A LOCATION THAT LINKS  
YOU TO EVERY CONVENIENCE AND  
**HAPPINESS**

Merushikhar, a landmark in Andheri East in a prime location with excellent connectivity to roads, social infrastructure, and sports facilities, invites you to live life to the fullest. With Airport and Metro/Railway station only a short distance away, you'll have easy access to corporate hubs, schools, shopping areas, and recreational activities. Live worry-free with an assurance that you will always arrive on time.



## UNITE WITH THE CITY'S FINEST OFFERINGS

### SCHOOLS :

Oberoi International School, JVLR Campus	12 MINS
Bombay Cambridge International School	12 MINS
Ryan Shalom Montessori	12 MINS
Billabong High International School	13 MINS

### RESTAURANTS/CAFÉS :

McDonald's	8 MINS
Gallery Café	10 MINS
Cocoon Restaurant	12 MINS
The Club Mumbai	15 MINS
The Brasserie	16 MINS

### HOSPITALS :

Dr. Phadke's Hospital	5 MINS
Seven Hills Hospital	16 MINS
Kokilaben Dhirubhai Ambani Hospital	17 MINS
Nanavati Max Super Speciality Hospital	18 MINS

### TRANSPORTATION :

Line 7 Mogra Metro Station	1 MIN
Western Express Highway	2 MINS
Andheri Railway Station	5 MINS
Azad Nagar Subway Station	7 MINS
International Airport	11 MINS

### ENTERTAINMENT & LIFESTYLE :

Shoppers Stop	9 MINS
Decathlon Sports	12 MINS
PVR Citi Mall	17 MINS
Infiniti Mall	18 MINS



BE A WITNESS TO ONE OF  
THE BEST VIEWS AT A  
**PREMIER PROPERTY**

Representative Image

LIVE UNITED WITH MUMBAI'S  
INCREDIBLE OPEN SPACES  
**THE ECO-FRIENDLY WAY**

Live sustainably with a Green Building Certificate, which includes Gold Certification and a reduction in the overall energy consumption of the building. Enjoy luxury eco-friendly living, accessible only to a selected few in the city. Enhance your living environment and live consciously with ample open spaces for peaceful and rejuvenating moments.



Rain-Water  
Harvesting



Open Spaces



Increased Sunlight,  
Air & Ventilation



Solar Panel  
Lamps

ECO-FRIENDLY PATH



Representative Image



## MONOLITHIC STRUCTURE

# LIVE IN THE FUTURE WITH REVOLUTIONARY CONSTRUCTION PRACTICES

Our prestigious residential project in Andheri East uses aluminum formwork monolithic structure technology. This advanced construction approach speeds up and improves precision and uniformity. This technology shows Merushikhar's dedication to building sustainable, eco-friendly, and creative homes. Merushikhar's this technology saves material waste and makes the construction more durable.

Representative Image



A PARADISE, WHERE YOU  
BREATHE MORE AND  
**SEE MORE**

Looking for a dream home with unmatched natural light, ventilation, and unobstructed views? Our stunning corner plot has it all: 3 sides of roads and a 60 ft. garden area at the back. All habitable rooms have windows facing towards the open spaces, providing abundant natural light and ventilation compared to any other project. Wake up to beautiful natural surroundings and enjoy fresh air every day. The garden area at the back offers a serene and relaxing space for you to unwind and enjoy some time outdoors.

**OPEN SPACES**



Representative Image

## JAIN DERASAR



## DISCOVER YOUR SPIRITUAL SELF AND REUNITE WITH **INNER PEACE**

A Jain Derasar is located just adjacent to the residence. A perfect place to enhance your peaceful spiritual awareness, connect with the divinity and make your daily life extraordinary.

EXPLORE AN INFINITELY  
UNITED WORLD OF  
**COMFORT**

Indulge in the comforts, with well-designed amenities at Merushikhar. Enjoy luxury living with amenities that soothe your mind, body, and soul.





ENTRANCE LOBBY

A SPECTACULAR ENTRANCE  
LOBBY BEFITTING YOUR  
**EXTRAORDINARY LIFE**

Representative Image

THE ULTIMATE DESTINATION  
FOR EVERYDAY  
**CELEBRATION**

**MULTIPURPOSE HALL**



Representative Image

YOGALAYA



Representative Image

STAY CONNECTED WITH  
YOURSELF THROUGH  
**PEACE AND HAPPINESS**

BUILD THE GREATEST  
**VERSION OF YOU**

**GYMNASIUM ON PODIUM**



Representative Image

ELEVATED INFINITY POOL



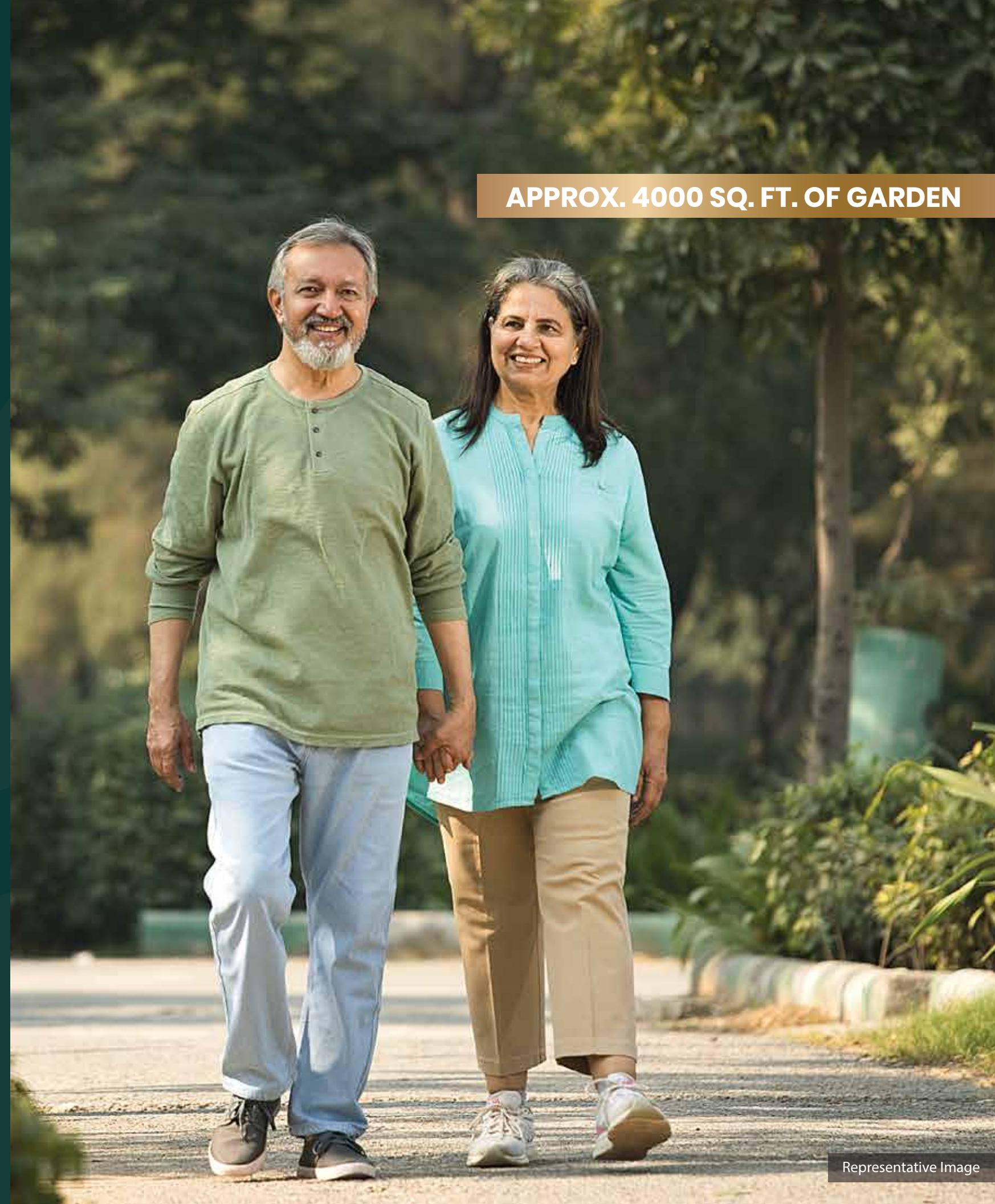
IMMERSE YOURSELF IN THE  
DEPTHS OF  
**TRANQUILITY**

Representative Image



TAKE A STEP INTO  
**HEALTHIER LIVING**

**APPROX. 4000 SQ. FT. OF GARDEN**



Representative Image



INTERIORS

THE FINEST INTERIORS TO  
UNITE YOUR INNER SELF WITH  
**OUTER SURROUNDINGS**

Create cherished memories with loved ones in well-designed homes prioritizing natural light, ventilation, and happiness at Merushikhar, which offers 10ft. floor-to-ceiling height. You can maximize your space with carefully planned interiors while minimizing waste. Make your ideal world and your home the center of it all.

Representative Image

# APARTMENT SPECIFICATIONS

## FLOORING:

- Vitrified Tiles in Living, Dining, Kitchen & Passages
- Laminated Wooden Flooring in Master Bedroom
- Double-Charged Vitrified Tile Flooring in other Bedrooms
- Ceramic Anti-Skid Tiles in Bathroom & Washrooms

## DADO:

- Standard Tiling under Kitchen Counters
- High-Quality Ceramic Tiles in Bathrooms

## WALL FINISHES:

- Flawless wall finish with Gypsum Plaster
- Expertly applied Plastic Paint for Ceilings

## FALSE CEILING:

- Elegant Cornice in Living, Dining and Master Rooms

## STAIRCASE RAILINGS:

- All Railings will be in MS as per the Design of the Architect

## KITCHEN:

- Kitchen Counters double layered in pre-polished Granite/Marble/Stone
- Modular Kitchen provided with an appropriate finish

## DOORS & WINDOWS:

- 7 ft. Laminated Wooden Internal Door Frames with Flush Doors
- 8 ft. Veneered Main Door with provision for Security Door
- Stainless Steel/Brass Hardware Fittings for all Doors
- Powder-Coated Aluminium/UPVC External Frames and Windows

## TOILET:

- Granite with basin counter. Jaquar/Cera Fixtures and Chrome Plated Fittings

## ELECTRICAL:

- Branded Concealed Electrical Wiring with Ample Light and Power Points
- TV/Telephone outlets in Key Rooms & Modular plastic switches with MCBs
- Bathrooms equipped with Geysers/Boilers

## HVAC:

- Provision for A/C in all rooms
- Exhaust Fan in Bathroom & Kitchen

# COMMERCIAL SPECIFICATIONS

## INTERIOR SPECIFICATIONS:

- Anti-Skid Ceramic Floor Tiles
- Ceramic DADO Tiles of size 600x300 up to a Height of 2.1 meters in Toilets
- Shop provided in Bare Shell Condition with Plastered Walls

## EXTERIOR:

- A mix of Glazing & Exterior Grade Texture Paint for the Appropriate Finish
- Glass Cladding as per Design

## COMMON AREA PLUMBING:

- Standard Internal Plumbing in GI/CPVC/Composite

## COMMON TOILET:

- Branded Sanitary Fixtures & all Chrome Plated Fittings

## HVAC:

- Provision for Hi-Wall Split Air-Conditioners

# EXTRA AMENITIES

- Concierge Facility
- Lift Facia Marble or Engineered Stone on Typical Floors
- Themed Landscaped Garden on Ground and Podium
- Provision for Solar Panels on Terrace for common Area Lighting
- Charging point for Electric Cars
- Security Cabin
- Well designed Security Gate
- App based Communications from Common Area to Residents
- House Keeping Agency to Cater Common Area

# PROJECT LEVEL SPECIFICATION

## EXTERIOR:

- Exterior Grade Paint Finish with Texture
- Stone/G.I. Cladding as per Architect's Design

## PLUMBING:

- Standard Internal Plumbing in GI/CPVC/Composite

## TYPICAL LIFT LOBBY & STAIRCASE:

- Double Charged/GVT Vitrified Tile in the Lift Lobby
- Granite Stone Cladding on Lift Fascia
- Thick Indian Marble Flooring in the Staircase with Skirting
- Gypsum False Ceiling with OBD Paint in the Lift Lobby, 2 Hour Fire-Rated Door in the Stairs, Electrical & LV Shaft, Metal Door in FHC Shaft, MS Railing in Lift Lobby & Staircase as per Architect's Design

## ENTRANCE LOBBY/ PODIUM FLOOR LOBBY:

- Air-Conditioned Lobby
- Imported Flooring
- Wall Cladding 1200mm high
- Lift Fascia Cladding 2400mm high
- Acrylic Emulsion Paint
- Gypsum False Ceiling as per Design
- Furniture Layout as per Architect's Design

## MECHANICAL PARKING:

- Mechanical Parking as per Layout

## PARKING AREA:

- VDF Finish with Reflective Paint Markings in the Parking Area
- Dry Distemper on Walls and Ceiling
- Reflective Vinyl used for ACP Signages for Parking and Fire Escape

## LIFT:

- High-Speed Lifts by Reputed Company

## GENERATORS:

- Branded Generator for 100% Backup
- Covers Emergency & Safety Facilities
- Includes Lifts & Common Areas

## CLUBHOUSE/ FITNESS CENTER:

- Clubhouse with Fitness Center
- Gym with Indoor and Outdoor Games Areas
- His/ Her Changing Rooms and Toilets

## SECURITY:

- Optical Fiber Network Provisioned
- Video Surveillance System Installed
- Perimeter Security with CCTV Cameras
- Fire Prevention, Suppression, Detection & Alarm System Installed

## STRUCTURE:

- RCC Framed Structure for Earthquake Resistance

A LANDMARK WITH EXCEPTIONAL  
OFFICE SPACES FOR  
**BIG DEALS**

Merushikhar offers commercial space for businesses of all sizes. These spaces are ideal for retail, healthcare, pharmacy, and hypermarket businesses and are designed to meet their requirements and help them succeed.

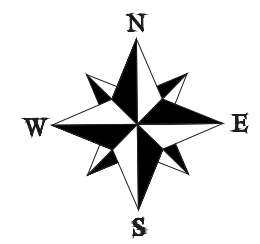
OFFICE/RETAIL SPACES

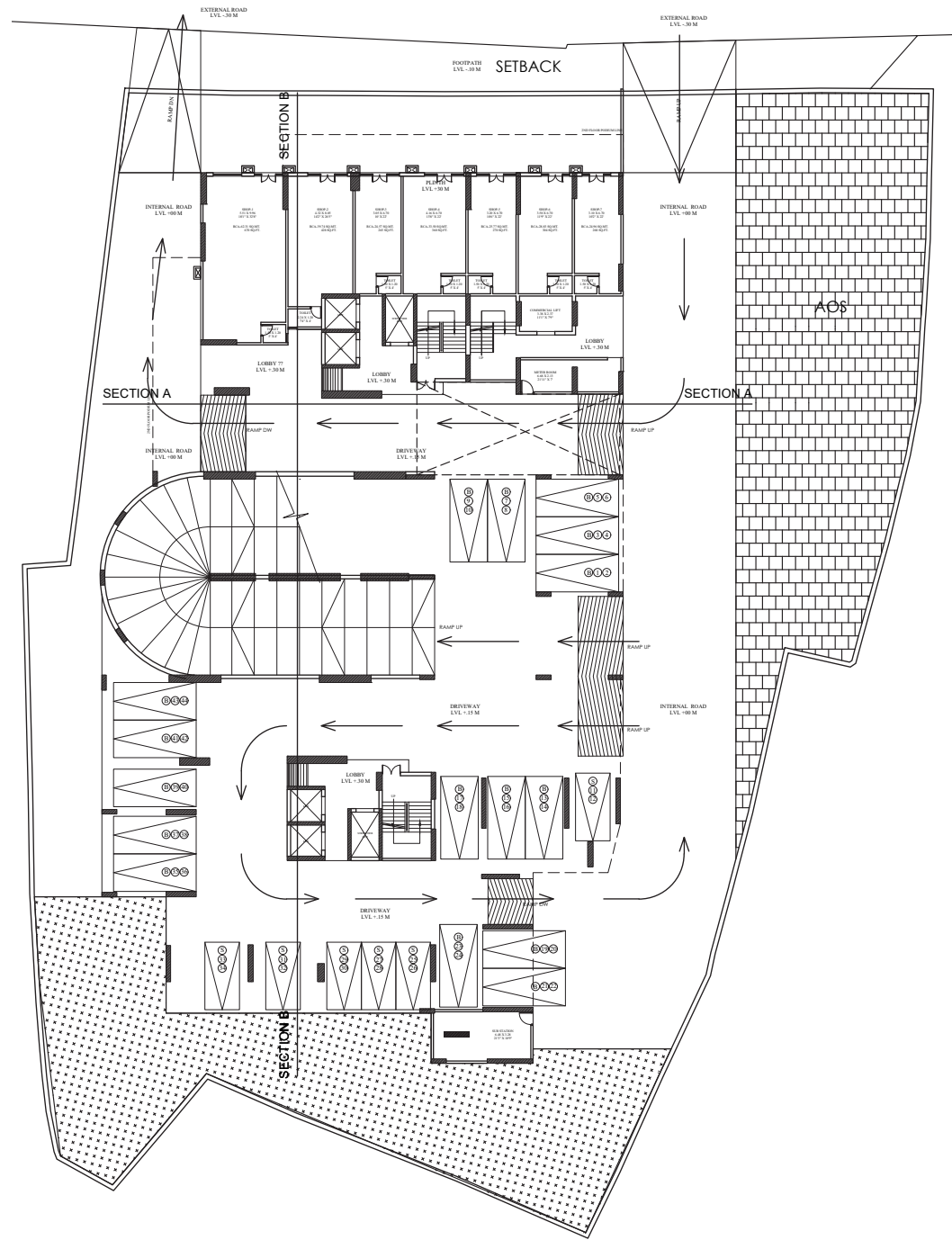


Representative Image

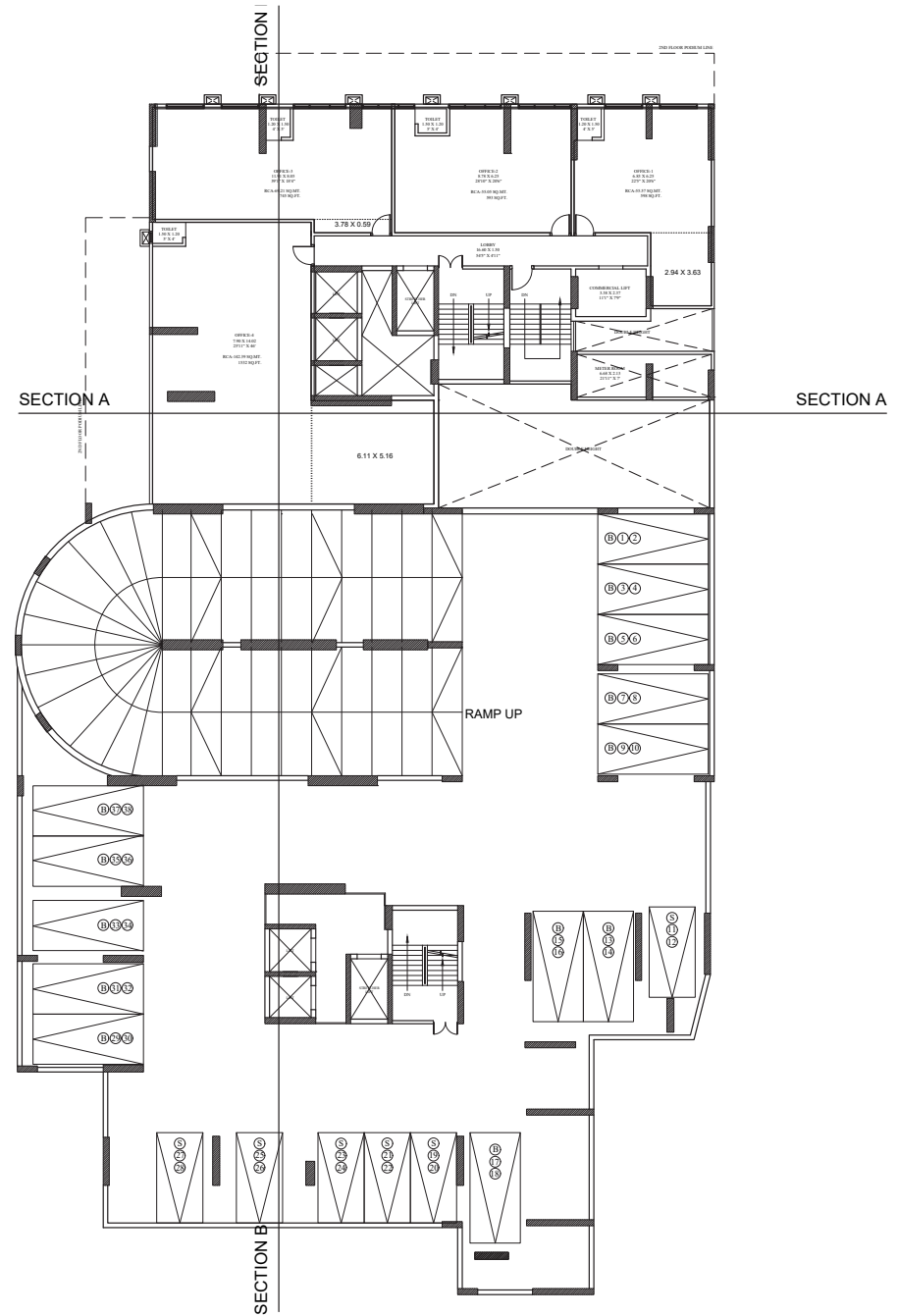
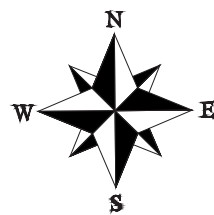


TYPICAL FLOOR PLAN

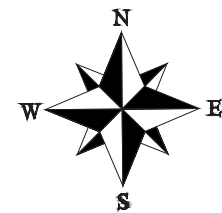




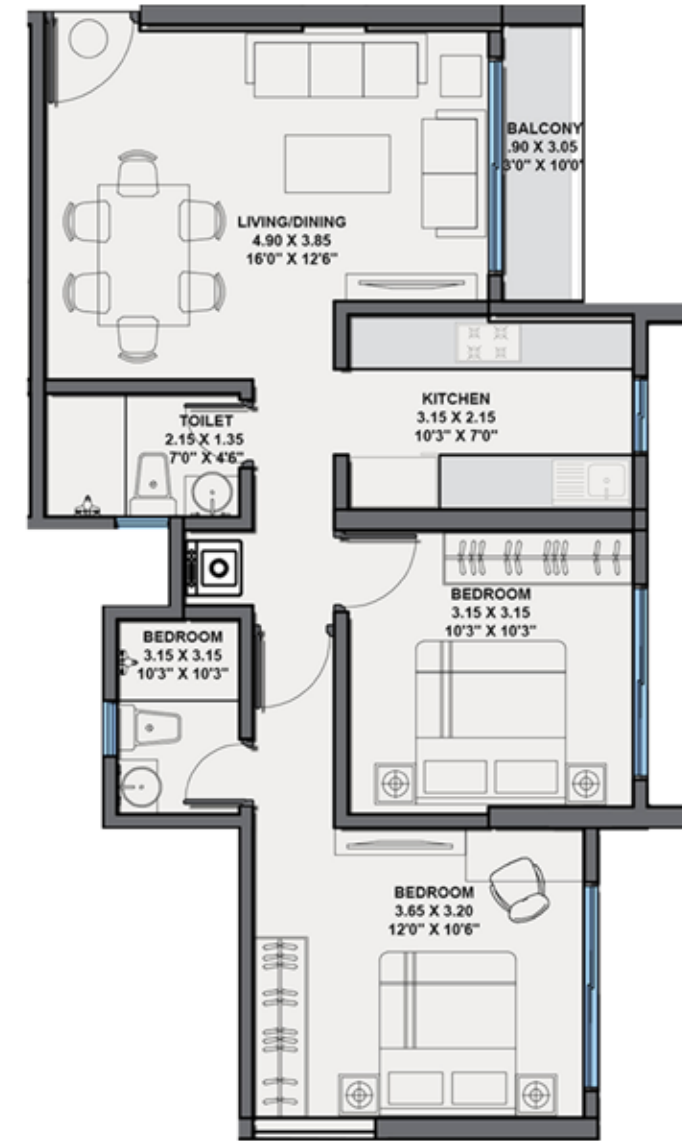
GROUND FLOOR



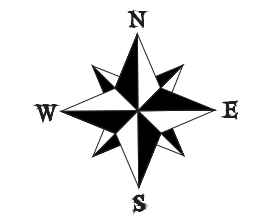
1<sup>st</sup> FLOOR COMMERCIAL OFFICE/PODIUM FLOOR



# A-WING PLANS



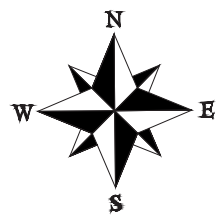
**A-WING**  
TYPICAL FLOOR PLAN - UNIT 1  
Carpet Area = 686 sq.ft. 2 BHK



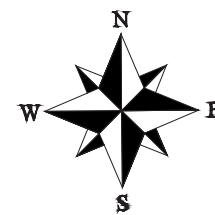


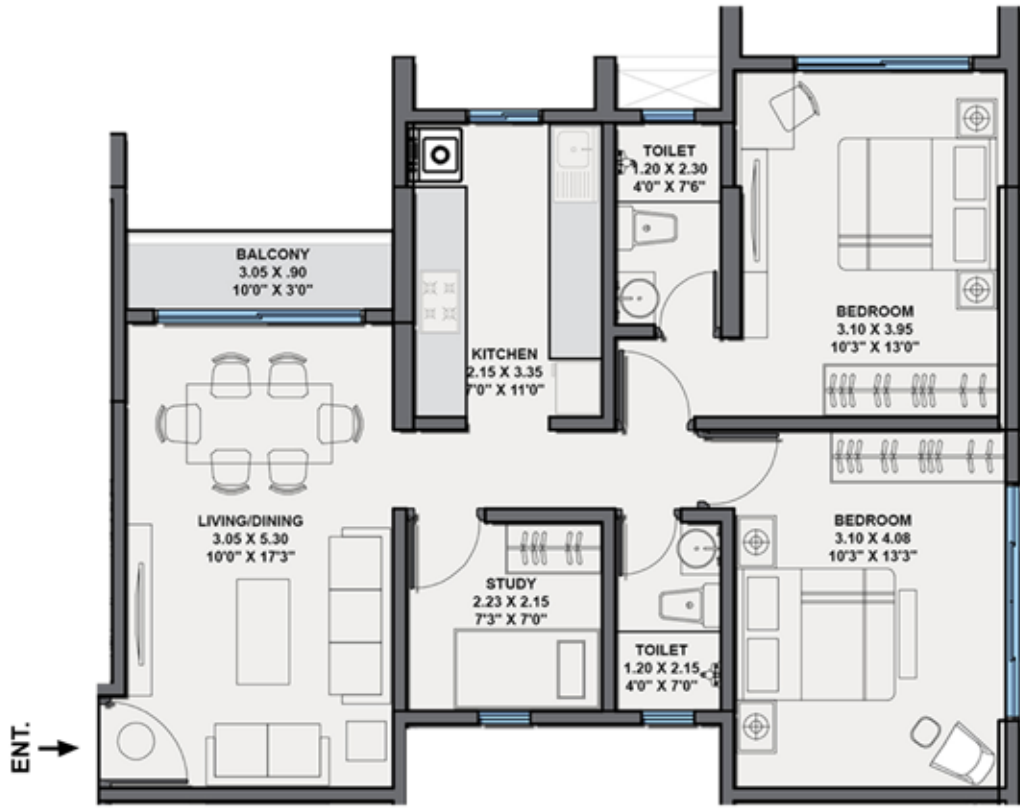


**A-WING**  
TYPICAL FLOOR PLAN - UNIT 2  
Carpet Area = 1107 sq.ft. 3.5 BHK

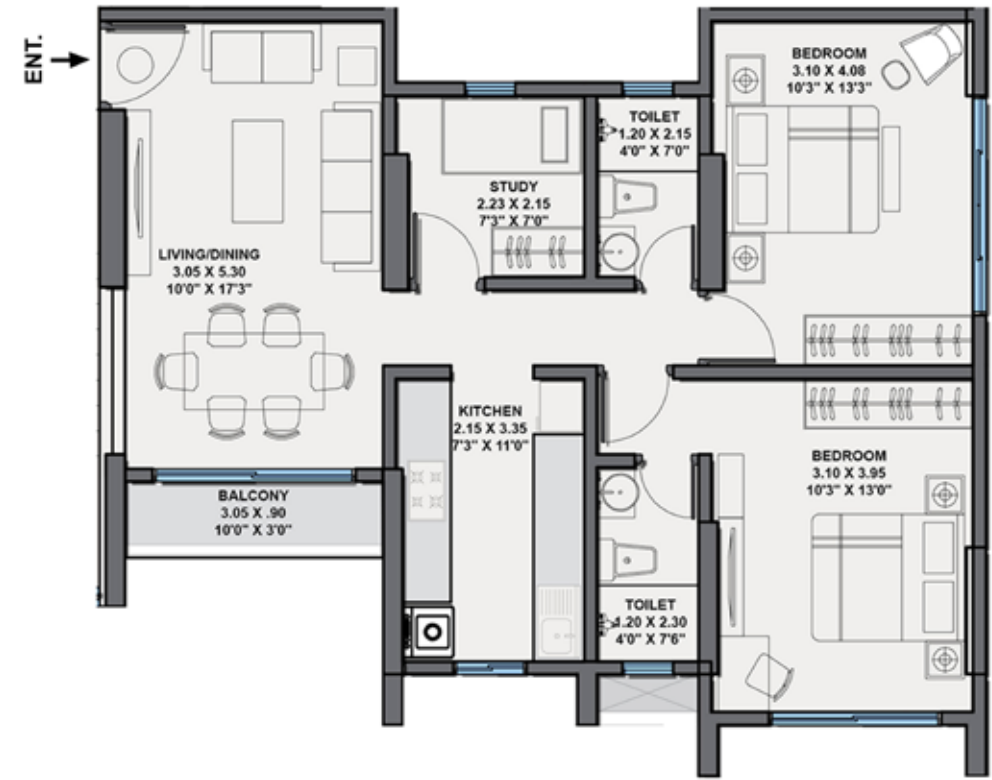
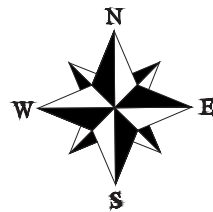


**A-WING**  
TYPICAL FLOOR PLAN - UNIT 3  
Carpet Area = 972 sq.ft. 3 BHK

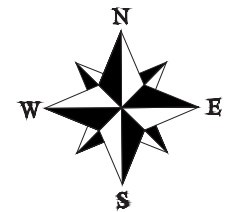




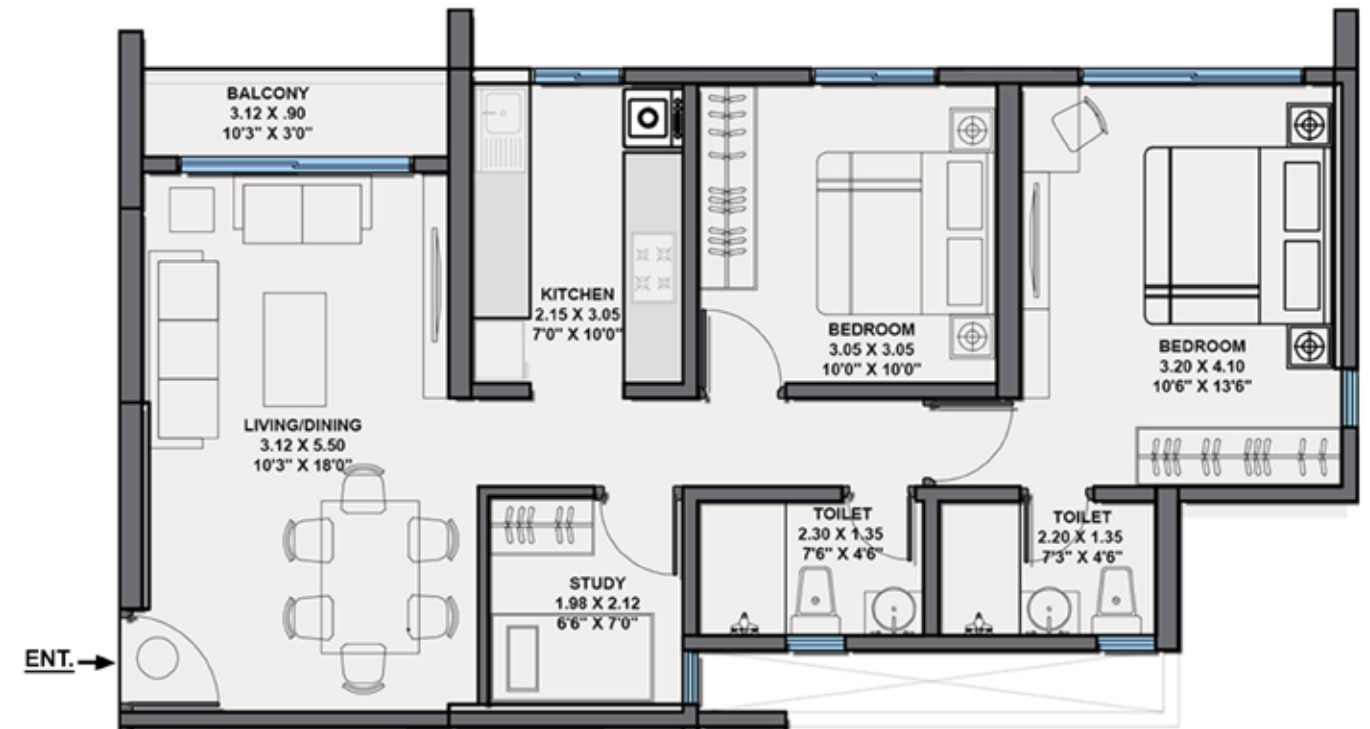
**A-WING**  
TYPICAL FLOOR PLAN - UNIT 4  
Carpet Area = 761 sq.ft. 2.5 BHK



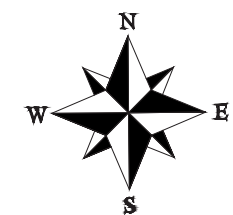
**A-WING**  
TYPICAL FLOOR PLAN - UNIT 5  
Carpet Area = 761 sq.ft. 2.5 BHK

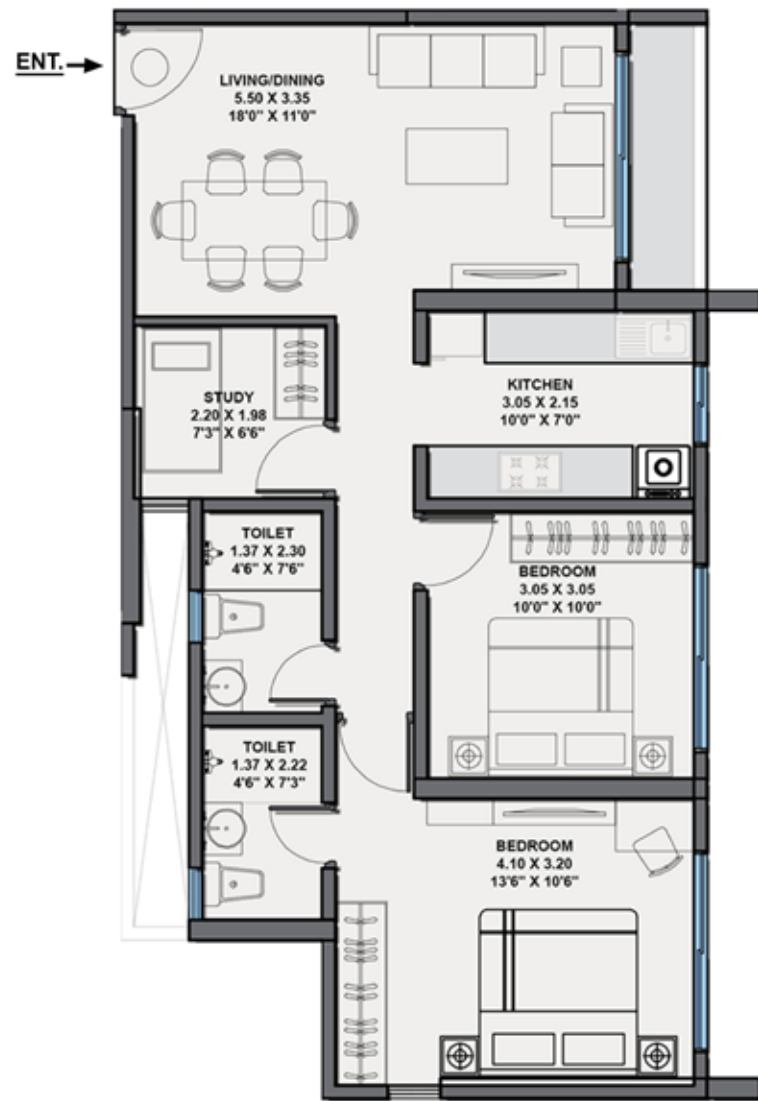


# B-WING PLANS

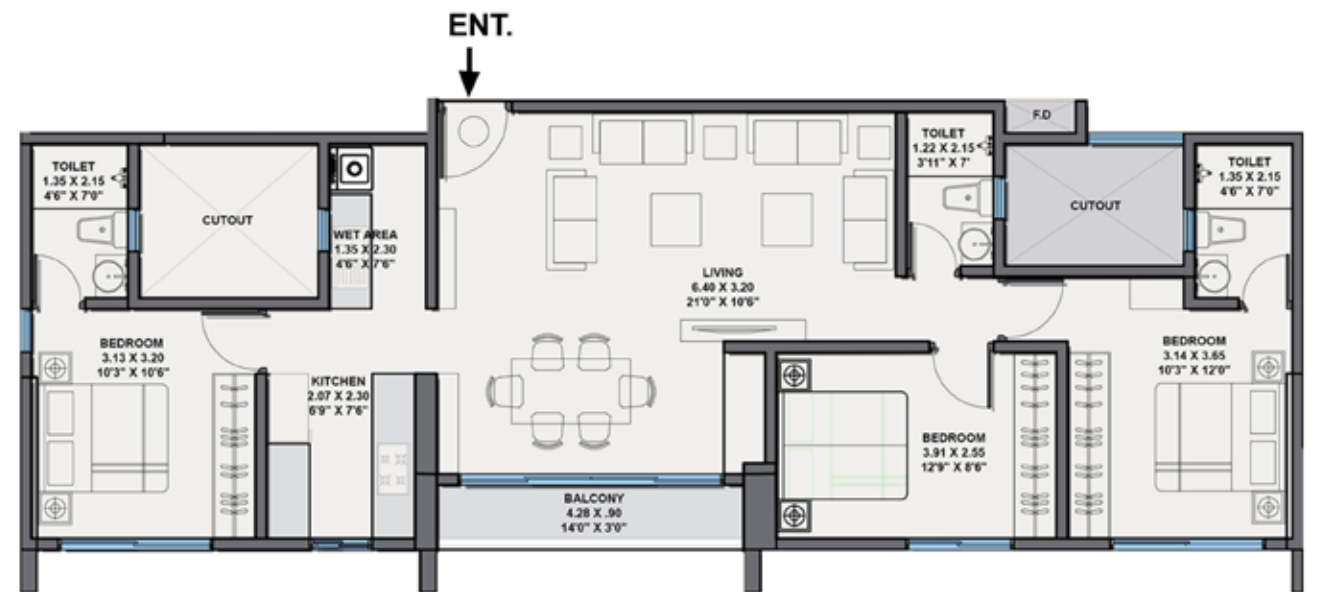
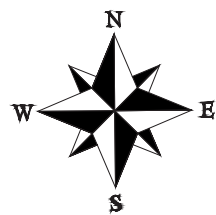


**B-WING**  
TYPICAL FLOOR PLAN - UNIT 1  
Carpet Area = 758 sq.ft. 2.5 BHK

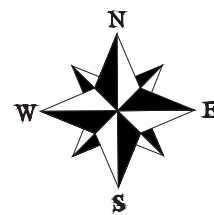


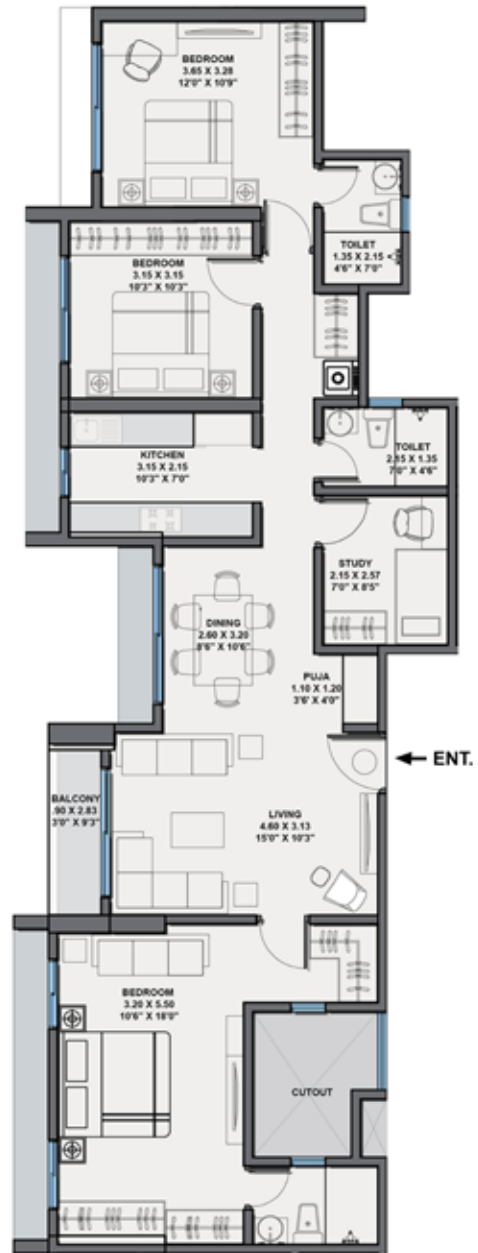


**B-WING**  
TYPICAL FLOOR PLAN - UNIT 2  
Carpet Area = 755 sq.ft. 2.5 BHK

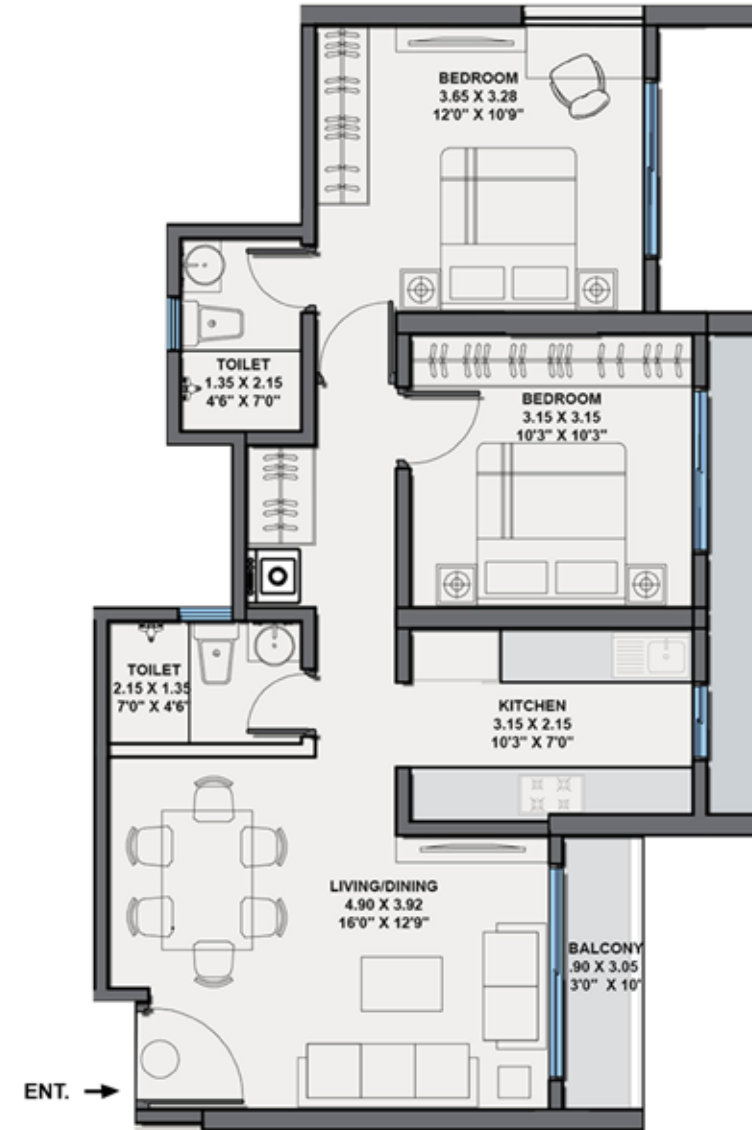
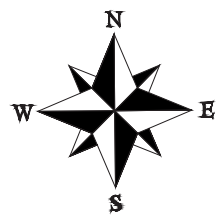


**B-WING**  
TYPICAL FLOOR PLAN - UNIT 3  
Carpet Area = 954 sq.ft. 3 BHK

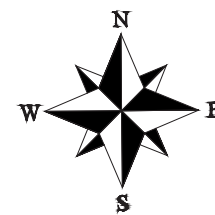


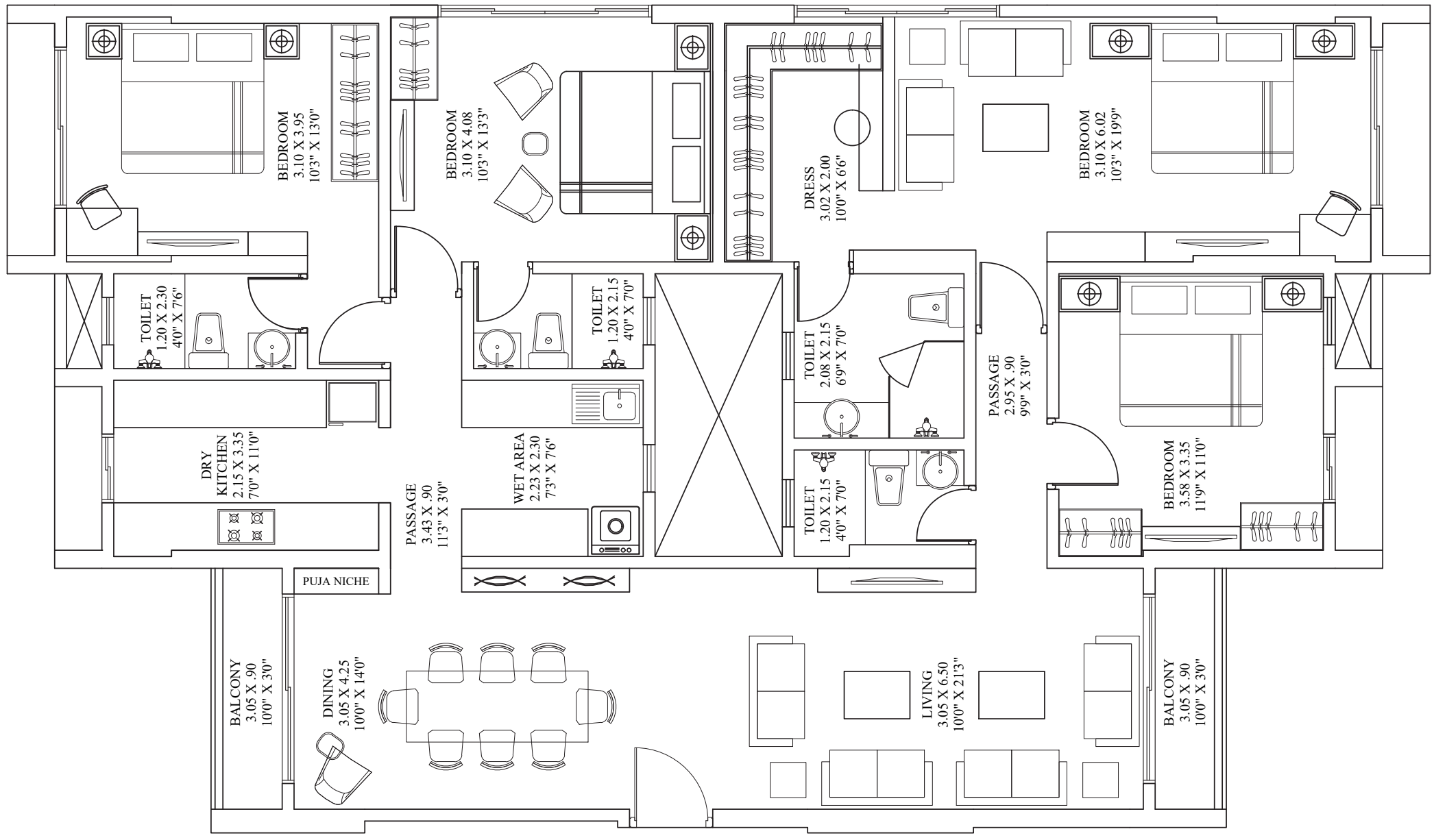


**B-WING**  
 TYPICAL FLOOR PLAN - UNIT 4  
 Carpet Area = 1100 sq.ft. 3.5 BHK

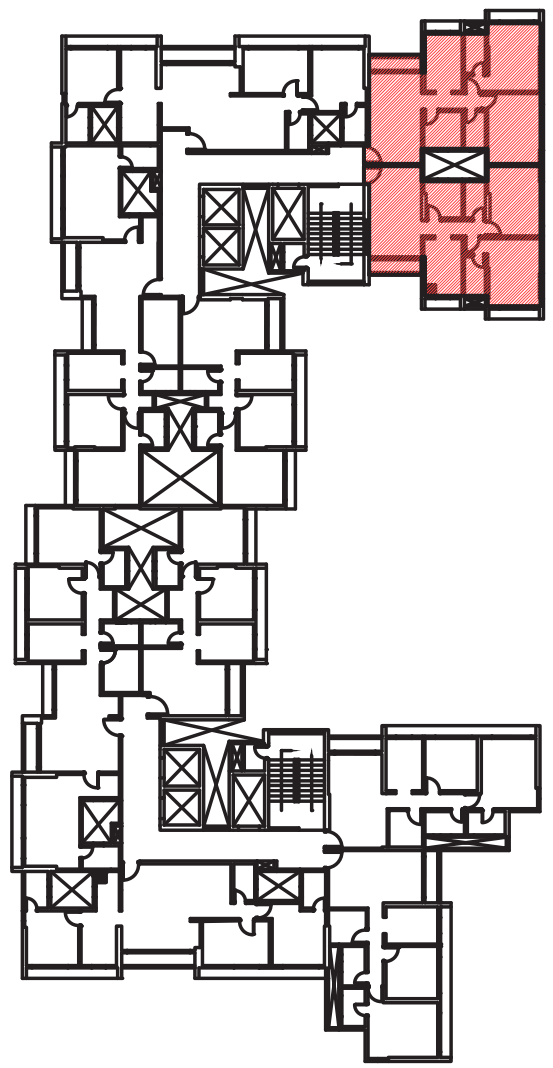
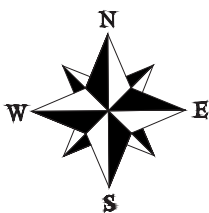


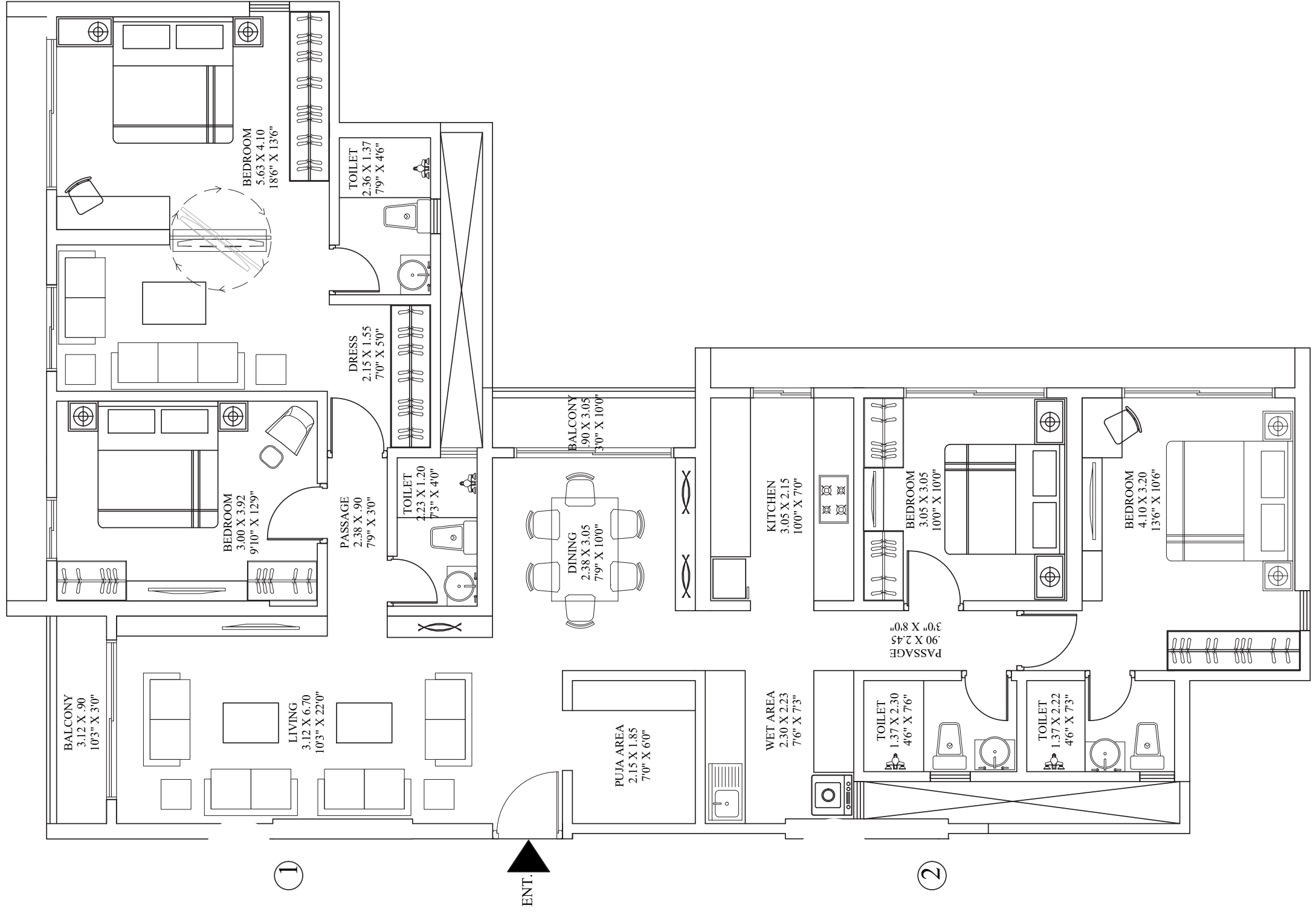
**B-WING**  
 TYPICAL FLOOR PLAN - UNIT 5  
 Carpet Area = 686 sq.ft. 2 BHK



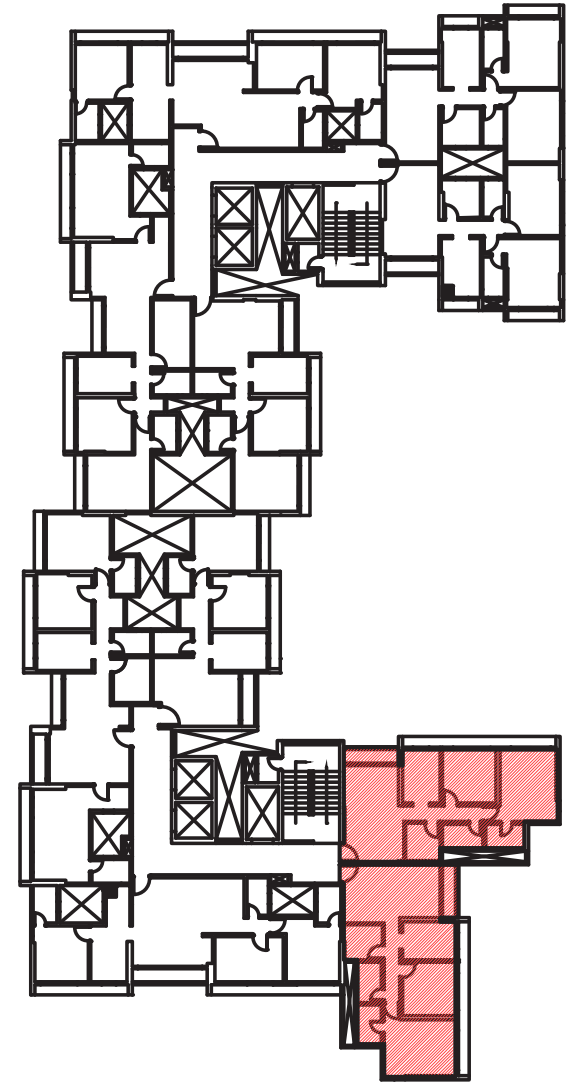
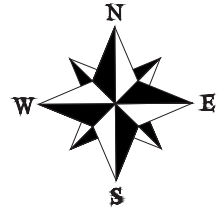


**A-WING**  
**JODI FLAT - 4 BHK UNIT**  
 Carpet Area = 1522 sq.ft.





**B-WING**  
**JODI FLAT - 4 BHK UNIT**  
 Carpet Area = 1513sq.ft.





PRESENTING



Merushikhar

AT ANDHERI EAST



Site Address: Merushikhar, Parsi Panchayat Road, Near Jain Mandir, Andheri East, Mumbai - 400069

MahaRERA Registration No.P51800049155 available at website: <http://maharera.mahaonline.gov.in>

Disclaimer - The information provided in this advertisement including all pictures, images, plans, drawings, amenities, dimensions, elevations, illustrations, facilities, features, specifications, other information, etc. mentioned are indicative of the kind of development that is proposed and are subject to the approval from the competent authorities. Pictures, visuals, perspective views of building, model, furniture and maps are artist's conceptions and not the actuals. Furniture, Fixtures, Accessories and furnishings shown in the show flat are only for representation and shall not be provided in the actual flat. The Registered Project Name Is Merushikhar By SAVV Group.